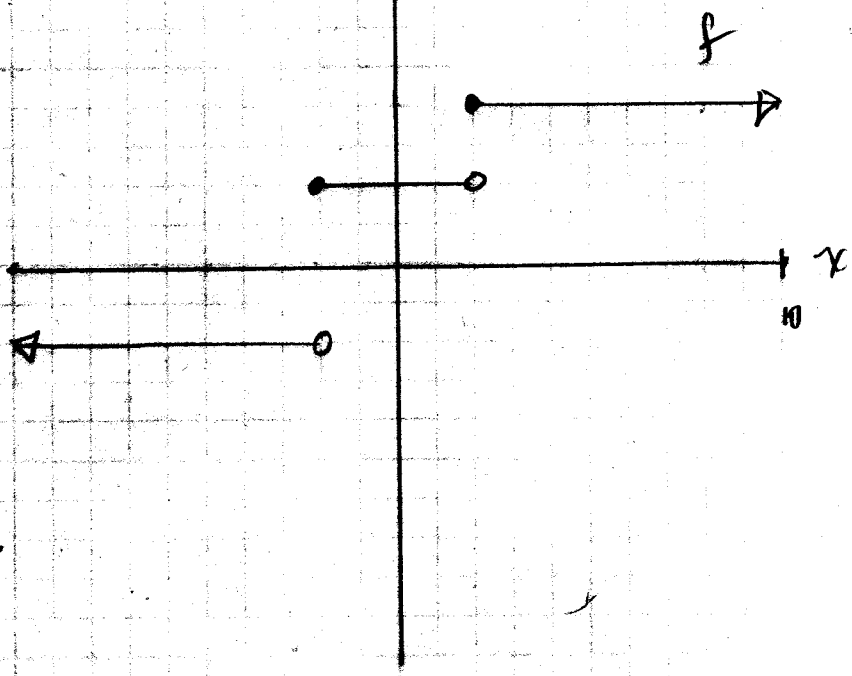


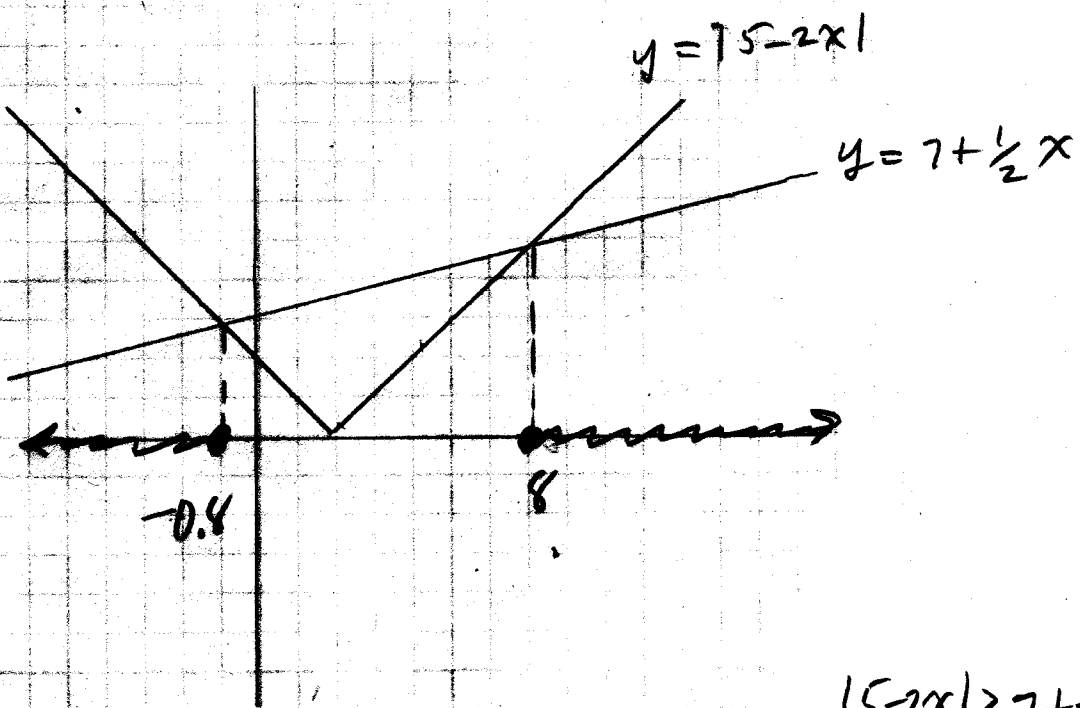
5/11
①

4B

35



6/25
②



$$|15 - 2x| \geq 7 + \frac{1}{2}x$$

SP3

30

$$3 + 7|x-5| > 5|x-5| + 9$$

$$7|x-5| - 5|x-5| > 9 - 3$$

$$2|x-5| > 6$$

$$|x-5| > 3$$

$$x-5 < -3 \quad \text{or} \quad x-5 > 3$$

$$x < 2$$

$$x > 8$$

SP3

31

$$\left| x - \frac{x+4}{9} \right| \leq 2$$

$$-2 \leq x - \frac{x+4}{9} \leq 2$$

$$-18 \leq 9x - 9\left(\frac{x+4}{9}\right) \leq 18$$

$$-18 \leq 9x - (x+4) \leq 18$$

$$-18 \leq 9x - x - 4 \leq 18$$

$$-18 \leq 8x - 4 \leq 18$$

$$-14 \leq 8x \leq 22$$

$$-\frac{14}{8} \leq x \leq \frac{22}{8}$$

$$-\frac{7}{4} \leq x \leq \frac{11}{4}$$

10pts

④

$$\begin{aligned}
 f(x) &= x^2 - 4x - 14 \\
 &= x^2 - 4x + 4 - 4 - 14 \\
 &= (x-2)^2 - 18
 \end{aligned}$$

To find y-int, let $x=0$

$$\begin{aligned}
 f(0) &= (0)^2 - 4(0) - 14 \\
 &= -14
 \end{aligned}$$

To find x-int, let $y=0$

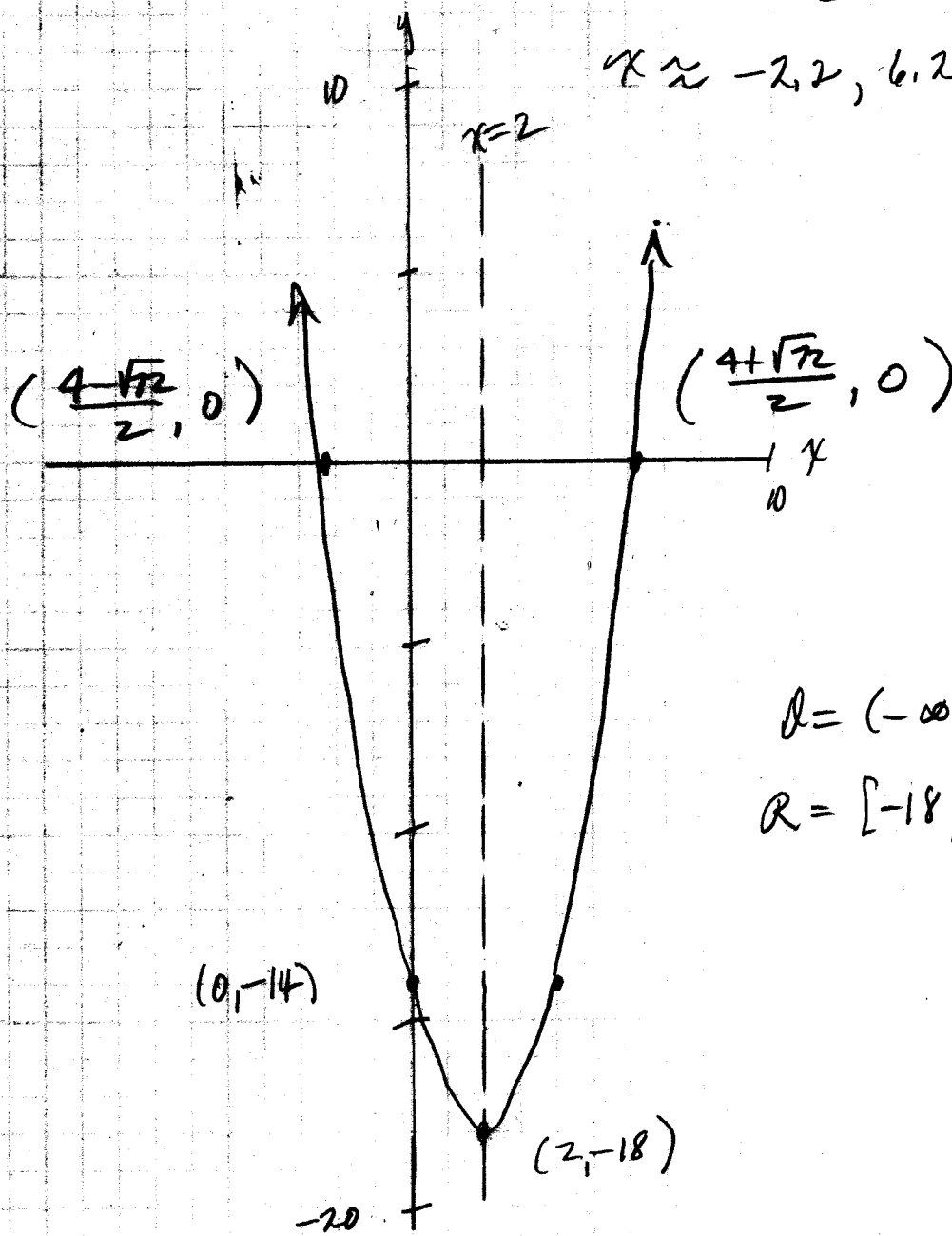
$$0 = x^2 - 4x - 14$$

$$x = \frac{-(-4) \pm \sqrt{(-4)^2 - 4(1)(-14)}}{2(1)}$$

$$x = \frac{4 \pm \sqrt{16 + 56}}{2}$$

$$x = \frac{4 \pm \sqrt{72}}{2}$$

$$x \approx -2.2, 6.2$$



$$D = (-\infty, \infty)$$

$$R = [-18, \infty)$$

503

⑤ Let x and y represent numbers.

$$x - y = 6 \quad (1)$$

$$P = xy \quad (2)$$

Solve ① for x :

$$x = y + 6 \quad (3)$$

Sub ③ in ②:

$$P = (y + 6)y$$

$$P = y^2 + 6y$$

$$y_v = -\frac{b}{2a} = -\frac{6}{2(1)} = -3$$

To find x , sub $y = -3$ in ③:

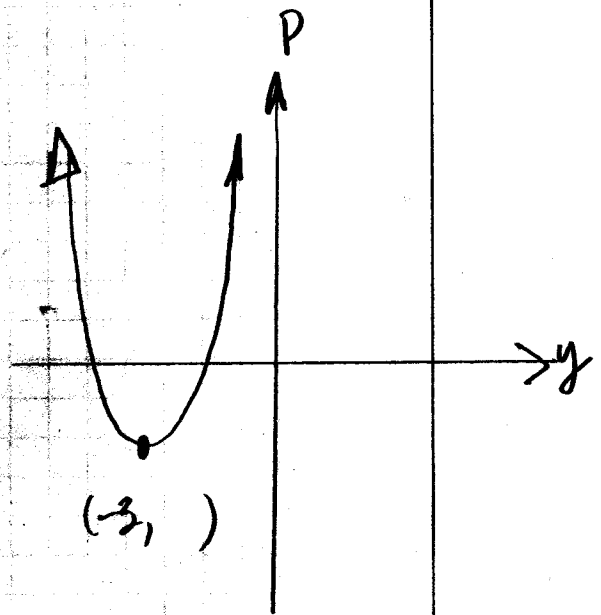
$$x = -3 + 6$$

$$x = 3$$

The numbers are:

$$x = 3$$

$$y = -3$$



**SUBJECTIVE SCORE
INSTRUCTOR USE ONLY**

100	90	80	70	60
50	40	30	20	10
9	8	7	6	5
4	3	2	1	0

(T) (F) KEY

	%	2	3		
1	A	B	C	D	E
2	A	B	C	D	E
3	A	B	C	D	E
4	A	B	C	D	E
5	A	B	C	D	E
6	A	B	C	D	E
7	A	B	C	D	E
8	A	B	C	D	E
9	A	B	C	D	E
10	A	B	C	D	E
11	A	B	C	D	E
12	A	B	C	D	E
13	A	B	C	D	E
14	A	B	C	D	E
15	A	B	C	D	E
16	A	B	C	D	E
17	A	B	C	D	E
18	A	B	C	D	E
19	A	B	C	D	E
20	A	B	C	D	E
21	A	B	C	D	E
22	A	B	C	D	E
23	A	B	C	D	E
24	A	B	C	D	E
25	A	B	C	D	E
26	A	B	C	D	E
27	A	B	C	D	E
28	A	B	C	D	E
29	A	B	C	D	E
30	A	B	C	D	E
31	A	B	C	D	E
32	A	B	C	D	E
33	A	B	C	D	E
34	A	B	C	D	E
35	A	B	C	D	E
36	A	B	C	D	E
37	A	B	C	D	E
38	A	B	C	D	E
39	A	B	C	D	E
40	A	B	C	D	E
41	A	B	C	D	E
42	A	B	C	D	E
43	A	B	C	D	E
44	A	B	C	D	E
45	A	B	C	D	E
46	A	B	C	D	E
47	A	B	C	D	E
48	A	B	C	D	E
49	A	B	C	D	E
50	A	B	C	D	E

PART 1

IMPORTANT

TO USE SUBJECTIVE SCORE FEATURE:

- Mark total possible subjective points
- Only one mark per line on key
- 185 points maximum

EXAMPLE OF STUDENT SCORE:

100	90	80	70	60
50	40	30	20	10
9	8	7	6	5
4	3	2	1	0

SCANTRON

FORM NO. 882-E

NAME	E XAM #4B
SUBJECT	
TEST NO.	4B
PERIOD	
DATE	

REORDER ONLINE
www.scantromforms.com

TEST RECORD
PART 1
PART 2
TOTAL

© SCANTRON CORPORATION 1999
ALL RIGHTS RESERVED (U.S. PAT. NO. 5065997)

CUSTOMER SERVICE
1-800-722-6876

FEED THIS DIRECTION